



## A Note From Our Founder

### When the stakes are high, you can't afford to replace human analysis...

Technology has given our industry access to innumerable sources. Yet, despite its omnipresence and ease, technology cannot replace the human mind.

Mistakes happen all the time - some are more embarrassing than others. I heard from a private equity investor who approached a CEO about an issue that turned up through an online background check. The issue actually involved someone else with the same name, but this was only cleared up after some uncomfortable conversations with a frustrated CEO. False positives are a major challenge for automated background checking solutions.

Human analysis and creativity is required for many products but it is especially mandatory when conducting investigations. We continue to assess the merits of new technologies and sources as they are developed. Whether it's the coolest open source technology or the flashiest and quickest new research platform, nothing replaces the value of human analysis. This is what separates an automated background check from a comprehensive investigation, and an embarrassed investor from a prudent and well informed one.

Our investigations will always rely on the human mind: the creative angle, connecting the dots and thinking beyond the output on the document. This approach continues to protect our clients.

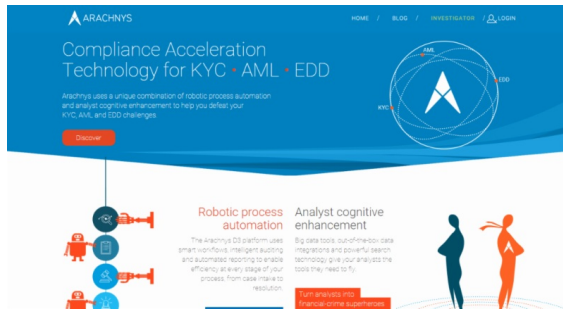
Sincerely,

Ken S. Springer  
Founder and President

[E-mail Ken](#)  
[LinkedIn](#)



## Arachnys Selected to Help Expand CRI's Global Data Sources

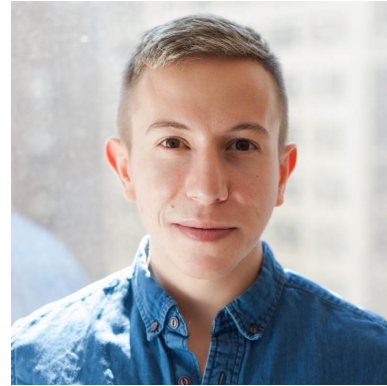


CRI has partnered with Arachnys to give our analysts and investigators immediate desktop access to international data managed across 16,000 sources, 215 countries and 80 languages. Arachnys allows us to uncover critical information for our clients in an accurate and efficient manner.

In 2016, international due diligence investigations accounted for 30% of CRI's total project volume. Arachnys extends our existing online research capabilities which are leveraged in connection with our exclusive network of in-country experts to provide clients with a complete picture of who they're doing business with across the globe. Arachnys also plays a critical role in our country specific red flag reviews to provide clients with quick answers while controlling costs.

For more information please contact Joelle Scott at 212-691-7507 or [jscott@corporateresolutions.com](mailto:jscott@corporateresolutions.com)

## Analyst Spotlight Dylan Anderson



Dylan joined CRI in March 2015, bringing with him an impressive research acumen that has been invaluable to CRI and its clients.

Prior to CRI, Dylan spent six years working on political campaigns, specifically in the opposition research field, leading research efforts for hundreds of congressional and local races, various gubernatorial and US Senate candidates, New York City mayoral campaigns, and other non-profit and advocacy groups.

As a Senior Analyst, Dylan manages client projects and uses his extensive research knowledge to train other analysts. In addition, Dylan helps spearhead efforts to identify new data sources for CRI.

Dylan graduated from New York University, *summa cum laude*, with a Bachelor of Arts degree in Political Communication & Culture. A disciplined fitness buff, Dylan wakes up at 4:30AM to work out, unless he's vacationing on Fire Island, in which case he'll allow himself to sleep in until 7AM!

## We're In The News

**Entrepreneur.**  
May 5, 2017

*Why Embezzlement Most Often Occurs at Small Businesses — and How to Prevent It From Happening to You*

Ken S. Springer was a featured guest writer for Entrepreneur.

[Click here to read the full article](#)

**Bloomberg BNA**  
May 3, 2017

### *Employers Beware Potential Skeletons in Executives' Closets*

We sat down with Bloomberg's Genevieve Douglas to discuss how executives may not be as thoroughly vetted in the hiring process as other employees, potentially leading to bad hires at the top of the company, lawsuits and scandal.

[Read full article](#)

### **10th Annual Investment and M&A Opportunities in Healthcare**

June 7-8, 2017

Ken S. Springer was in Nashville, TN earlier this month to speak to healthcare investors at the 10th annual event put on by iiBIG. Ken sat on a Transaction Services panel covering the “dos and don’ts” before, during and after the deal. [Event details](#)

[More News and Events](#)

*Corporate Resolutions Inc. (CRI) specializes in due diligence background investigations for the alternative investment community.*

*Founded by a former FBI agent, CRI has been trusted for over 25 years by financial institutions, attorneys, corporations and family offices to help them make informed decisions. Clients rely on our expertise to access critical information and connect the dots allowing them to transact with confidence wherever opportunities arise.*

[Contact Us](#)

---

## **Corporate Resolutions Inc.**

**345 Seventh Avenue, 10th Floor  
New York, NY 10001**

**(212) 691 3800**

[info@corporateresolutions.com](mailto:info@corporateresolutions.com)



[www.corporateresolutions.com](http://www.corporateresolutions.com)